

S 

- Vera pelle fiore rettificata, pigmentata e smerigliata di origine europea.
- Colori solidi e resistenti.

- *Buffed real leather from European hides.*
- *Solid and durable colours.*

- *Cuir de vachette d'origine Européenne; fleur légèrement rectifiée.*
- *Couleurs solides et résistantes.*

- *Reines Leder von europäischer Herkunft.*
- *Reines Leder in Starken und Dauerhaften Farben Lieferbar.*

- *Cuero natural rectificado de Flor, de bobino de origen europeo,*
- *Colores sólidos.*



S 01



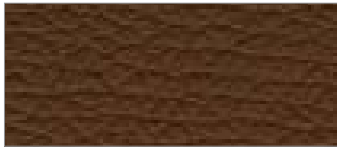
S 29



S 23



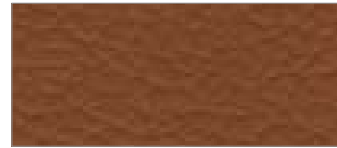
S 30



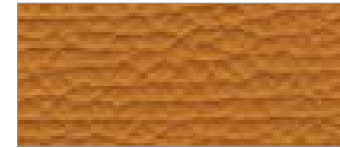
S 33



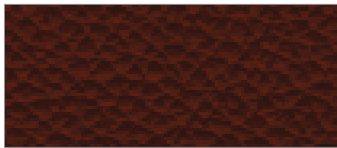
S 22



S 27



S 35



S 34



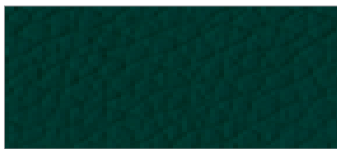
S 32



S 28



S 15



S 12